



IN-GROUND INSTALLATION INSTRUCTIONS & USER GUIDE

14' X 14' SUPER QUAD

VISIT LINK BELOW FOR INSTALL VIDEO

[MAXAIRTRAMPOLINES.COM/SUPPORT](https://maxairtrampolines.com/support)

TABLE OF CONTENTS

Materials, Components, and Tools.....3

Architect Specifications.....4 - 6

 Total Footprint.....4

 Pit Dimensions - Front & Side View.....5

Installation Instructions.....6 - 9

Figures.....10-11

Pit and Bracing.....12

Frame Setup Diagram.....13

Standard Spring Setup Guide.....14

Pad Installation & Diagram.....15 - 16

Oletex Installation Diagram.....17

Foam Layout.....18

Velcro Straps.....19

Red Clip Disclaimer.....20



YOUR COMPLETE TRAMPOLINE UNIT FROM MAXAIR TRAMPOLINES CONSISTS OF

- (104) Side Springs
- (10) Extra Side Springs
- (16) Corner Springs
- (1) 14' x 14' Trampoline Bed
- (12) Frame Pieces

OPTIONAL PADDING CHOICES

- Deluxe Pads, Premium Pads, or Spring Pad Covers
- End Deck Mats

MATERIALS YOU WILL NEED TO PURCHASE

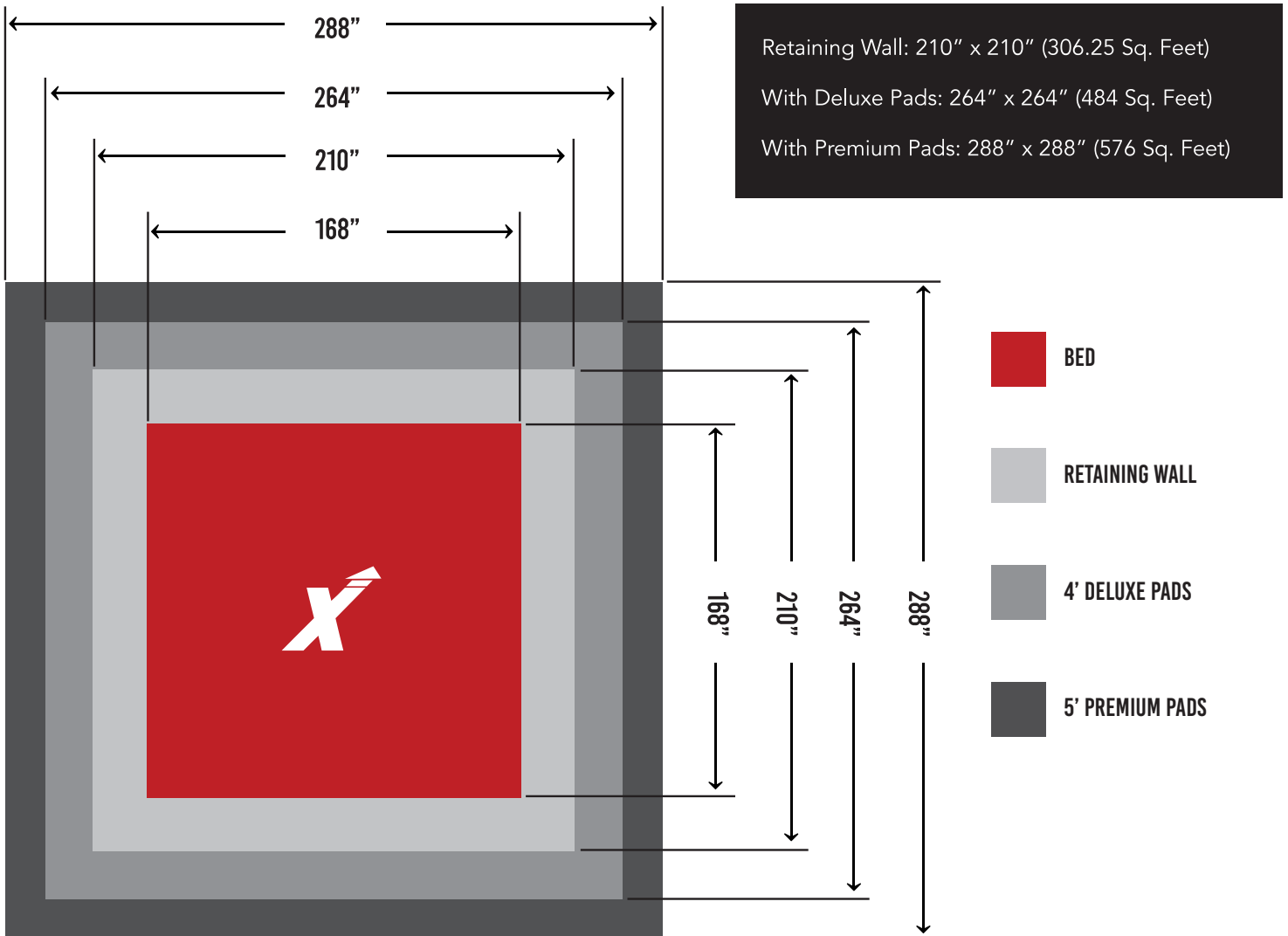
- (1) 50 lb Case of 10" x 3/8" Galvanized Landscaping Spikes
- (37) 8' x 6" x 6" Wolmanized Landscaping Ties
- (30) 7" x 1/2" Galvanized Lag Bolts
- (30) 1/2" Galvanized Washers
- (2) 3' x 100' Roll of Landscaping Fabric
- (2) Yards of Crushed Stone (1/2" to 1" Diameter Stones)
- * GRK 3/8" x 10" yellow polymer round washer interior/exterior wood screws or landscaping spikes. "You will need one for each grommet hole on the back edge flap of the pad". Not included.
- * Pressure treated 2x4's to go around the perimeter of the trampoline pads.

TOOLS

- Hammer
- Sledgehammer
- Circular Saw
- Drill and 3/8" Drill Bit
- 6' Level
- Handsaw
- 3/4" Socket Wrench
- Staple Gun
- Shovel

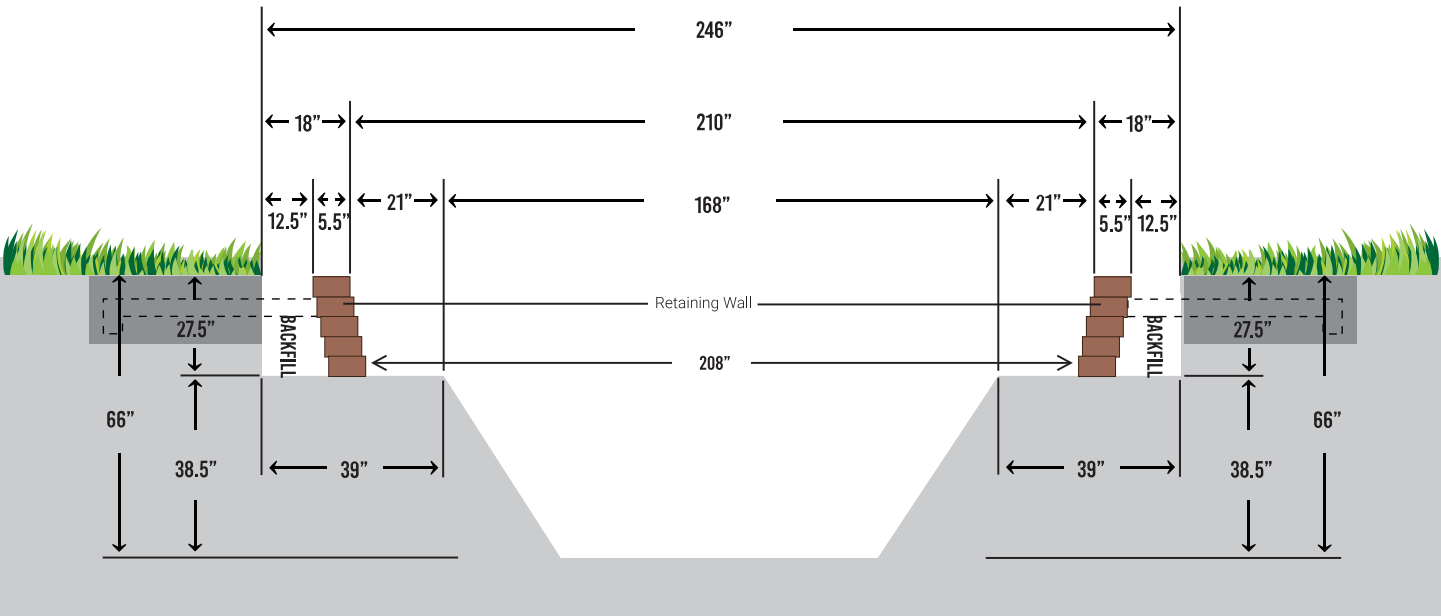
TOTAL FOOTPRINT

14' X 14' SUPER QUAD



*DIAGRAM IS NOT TO SCALE

IN-GROUND TRAMPOLINE HOLE - PIT DIMENSIONS - FRONT &



*Diagram is Not to Scale

8' X 6" X 6" LANDSCAPING TIE T-SUPPORT (REFER TO PG. 12, FIG 1.5)

Overall Pit Dimensions (W x L x D): 246" x 246" x 66"
Hole Depth: 66"

INSTALLATION INSTRUCTIONS

1. Dig pit to dimensions outlined on page 5
2. Notch one end of 8 of the landscaping ties by 5.5" x 5.5" x 2.75" (L x W x D). See Figure 1.1 (page 10)
3. Start building the first layer of your retaining wall. Inside dimensions of first layer of landscaping ties will be 207" x 207". Four of your notched landscaping ties will have to be cut to length. Landscaping ties can vary in length, so please be sure to check your measurements. Assemble the first layer of landscaping ties, interlocking the notched ends at the corners. Make sure that it is square and level. Drill a starter hole approximately 1-2" deep in each corner using a 3/8" drill and secure four corners with one landscaping spike per corner.
4. Building up, offset each remaining layer 1/4" back from the previous layer. Drill starter holes approximately 1-2" deep and secure each layer with landscaping spikes, spaced at a minimum of every 24" inches on center. After the first layer, the corners do not need to be notched. For structural strength, please make sure to offset the joints of the landscaping ties as you build up, as well as the corners.
5. While assembling the 4th layer, 2 t-supports will need to be installed in the centers of both side walls. To assemble each t-support, cut one 8' landscaping tie in half, creating two 4' pieces. Align 4' sections into a T-shape and secure using landscaping spikes. A total of 2 t-supports will need to be constructed. See Figure 1.2
6. Centered and extending from the edge of the pit on both sides, dig an area 50" x 37.5" x 16.5" (L x W x D) for each t-brace to rest. It is important that they be dug no deeper than 16.5" to ensure that soil remains compacted underneath the t-braces. We recommend digging by hand. See Figures 1.3, 1.4, & 1.5
7. Continue on to building the 5th layer. The inside dimensions of the 5th and final layer of ties MUST equal 210" x 210". Congratulations, you have completed the retaining wall.
8. Attach landscaping fabric to outside of retaining wall, securing with staples.
9. Backfill the area between the edge of pit and the outside of retaining wall as seen in diagrams on Page 5 as well as the areas that were hand-dug for the t-supports.
10. Line the bottom of pit with landscaping fabric, attaching fabric to inner-perimeter of retaining wall bottom, using staples.

INSTALLATION INSTRUCTIONS

11. Cover landscaping fabric with crushed stone to a depth of 2-3". Stone should cover the entire pit floor including bottom 2-3" of tapered retainer wall.
12. Place all 12 metal frame pieces in position on the top surface of your landscaping ties. Each side will consist of three frame pieces
13. Make sure all frame pieces are butted up to, and touching each other. Some pits don't end up being perfectly square, and dimensions may vary by an inch or two. Due to this, we recommend aligning the frame pieces so that the gap from the corners, to the frame edges are the same distance at each end (use measuring tape). This way, even if the lengths of your opposite walls are slightly different, your frame will still be centered.
14. On each of the 2 ends and the 2 sides, once the 3 frame sections are aligned, first bolt down the middle tabs of all 4 middle sections, using 7" x 1/2" lag bolts. Next proceed to bolt down all of the rest of the tabs.
15. Starting at one of the short ends of the trampoline bed, you will see a smaller clip in each of the corners. Attach a corner spring to the small clip and then attach to the frame. Working clockwise around the frame, repeat for all four corners. Trampoline bed is now in position, and ready for remaining springs installation.
16. Again, starting at one of the corners, attach two more corner springs to the remaining 2 corner clips and then attach each spring to the frame. Working clockwise around the frame, repeat for all four corners. When finished with this step, each corner will have 2 parallel corner-springs connected to the end frame, and 1 corner-spring connected to side frame. (See corner-springs diagram on page 14)
17. Attach the remaining springs one at a time, first to the short ends of bed and frame, spaced 5-1/4" from corner springs and from each other, alternating ends after installing each spring, until you have attached all springs to both ends. Repeat, for long sides of trampoline. 10 springs will remain.
18. Use 4 of the remaining springs, attach one diagonally in each corner, from wiggle wire to wiggle wire. (See bottom right corner of diagram on page 14)
19. Install pads over trampoline springs and frame. Depending on the pads ordered (Standard, Premium, or Deluxe), the method of attachment will vary. Follow pad installation instructions on pages 8 - 9.

Disclaimer: Remember to follow proper trampolining protocols to ensure your safety. For flipping and somersaulting skills, please consult a trained professional.

ORGANIZE YOUR PADDING AND PREP FOR INSTALLATION

MaxAir offers 3 different types of safety padding:

1. Spring Pad Covers - 28" wide x 2" thick.
2. Deluxe Pads - 48" wide - 7" thick.
3. Premium Pads - 60" wide - 9" thick.

Please use the following steps for proper installation of your safety padding.

Step #1

Know which of the three types of padding you have purchased. For this example, we will be using deluxe pads. Measure out 48" from the edge of the trampoline bed. Dig down 10" deep x 6" wide. Place the treated 2 x 4's at the bottom of the hole and cover it with dirt.

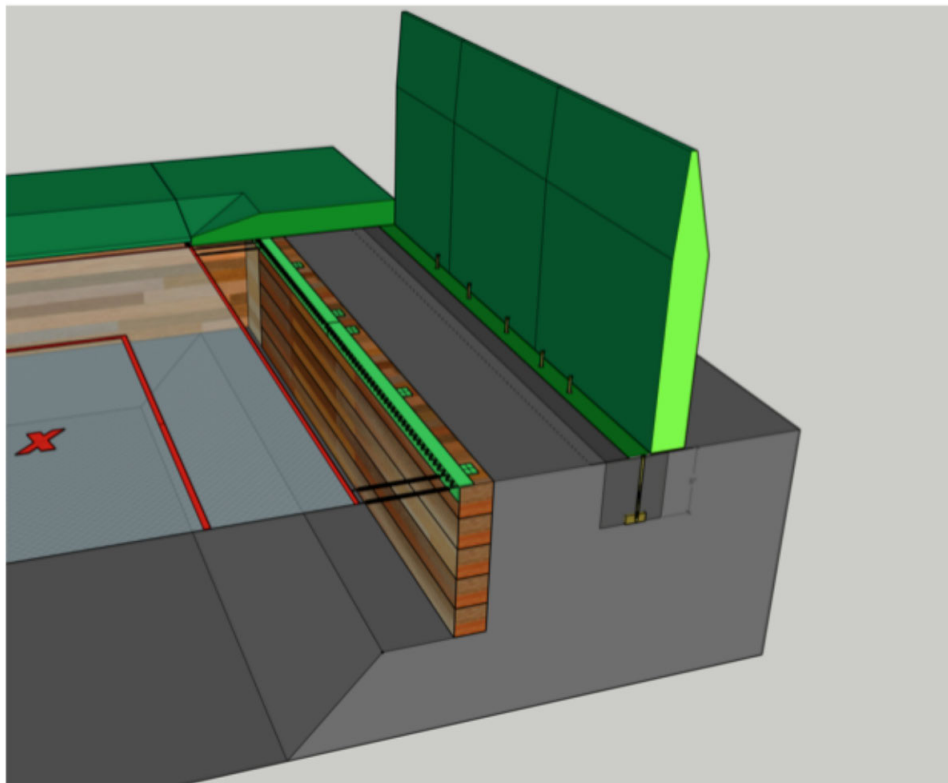


FIGURE #1

Step #2

Place the nose of the pads to the edge of the trampoline bed and tuck in the flap that is on the back edge of the padding. This will become a hinge. Rotate the pads so they stand on edge as in Figure 1.

Step #3

Use landscaping spikes or timber ties (GRK 3/8" x 10") to go through the grommet holes on the safety pad installation flap and dirt and into the 2 x 4's that are buried. Rotate the pads to their final resting place, laying them flat on the ground. See Figure 2.

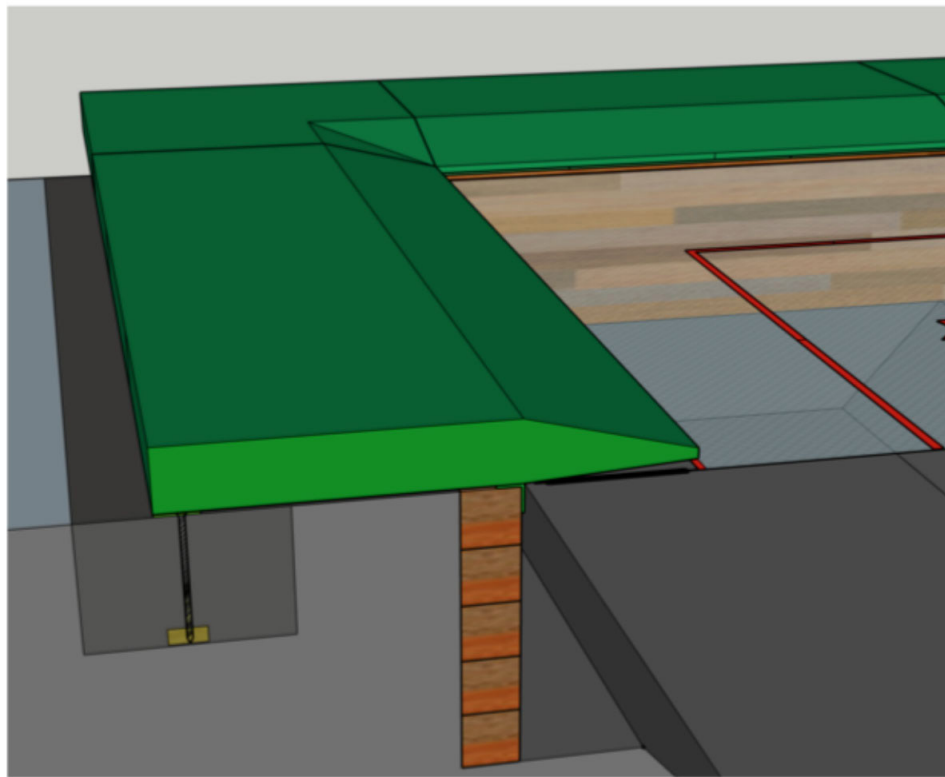


FIGURE #2

Layout foam pieces to figure out which pieces go where, refer to TRAMPOLINE PAD INSTALLATION diagram (page 16). Generally, if one side of your trampoline is longer than 8' you will be required to glue two pieces of equal length together to make a complete pad. For instance if you have a 7' x 14' trampoline, you will be required to glue together (2) 7' sections in order to make the 14' pad. The 7' section would come as a whole complete piece since it is under 8'.

FIGURE 1.3 - DIMENSIONS OF T-SUPPORT HOLE TO DIG

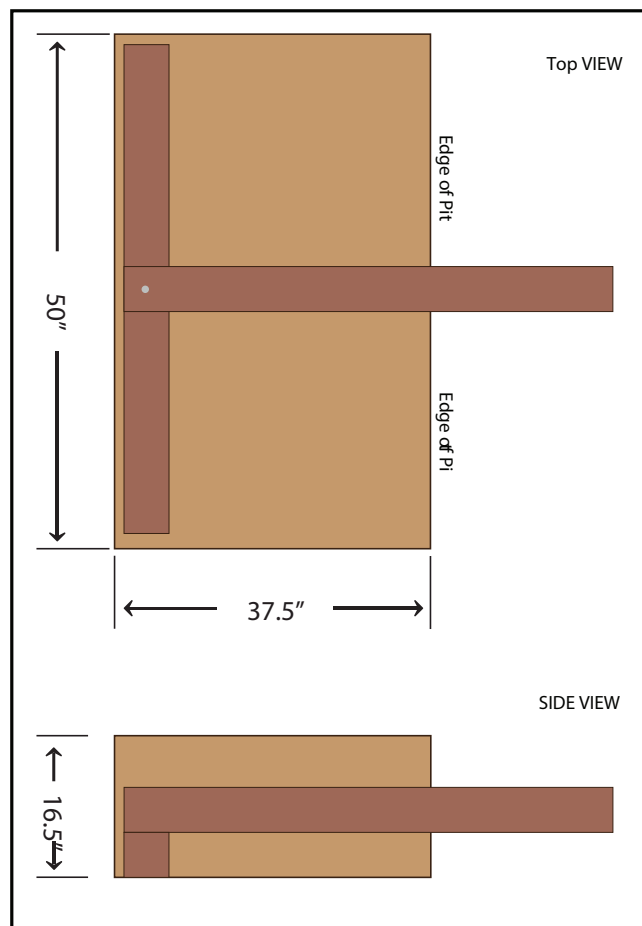


FIGURE 1.4

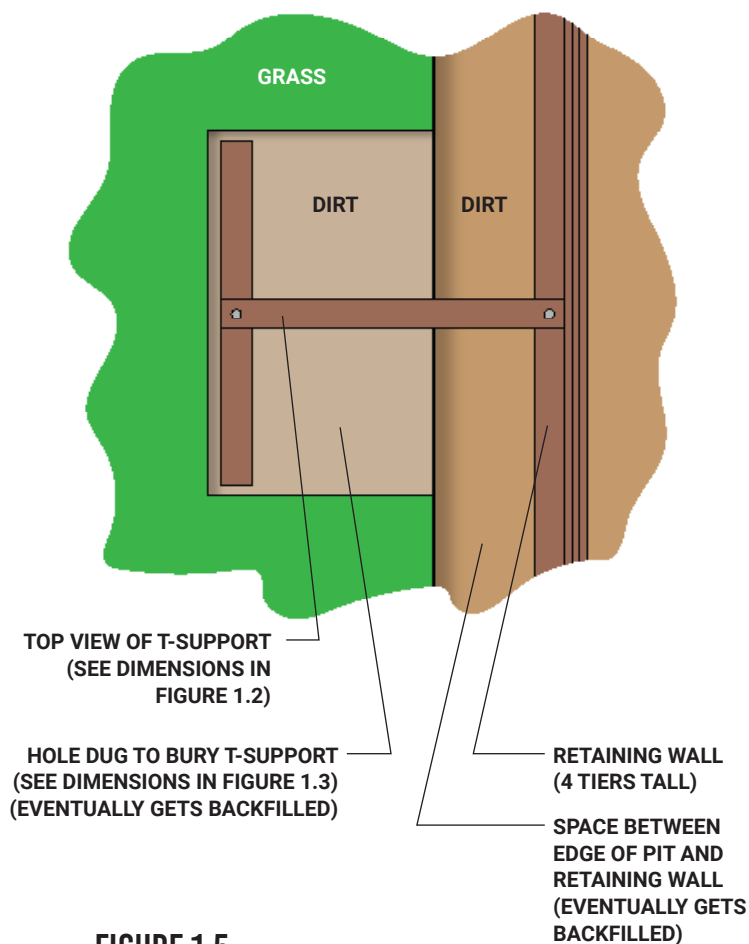


FIGURE 1.5

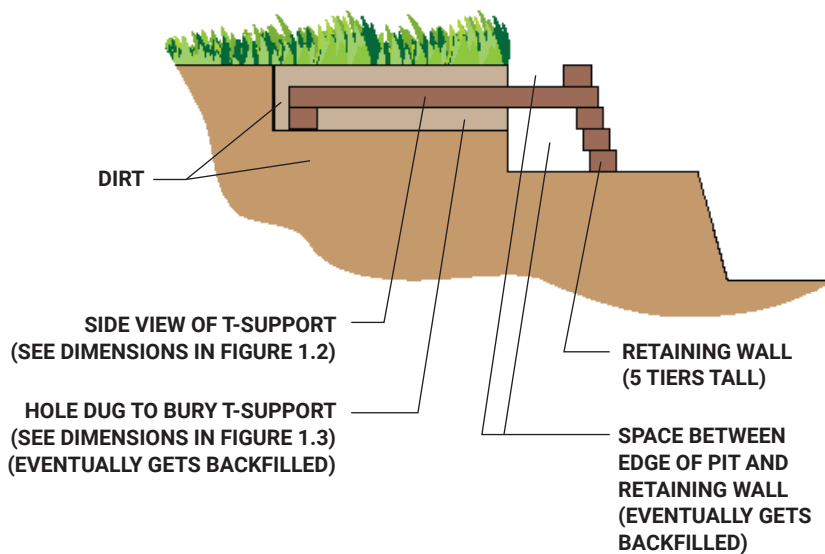


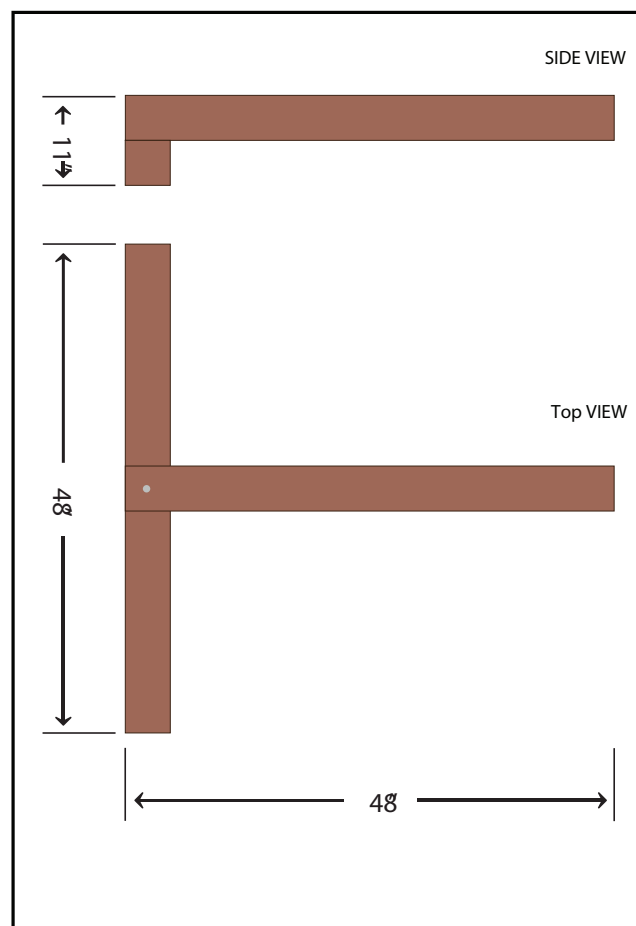
FIGURE 1.1



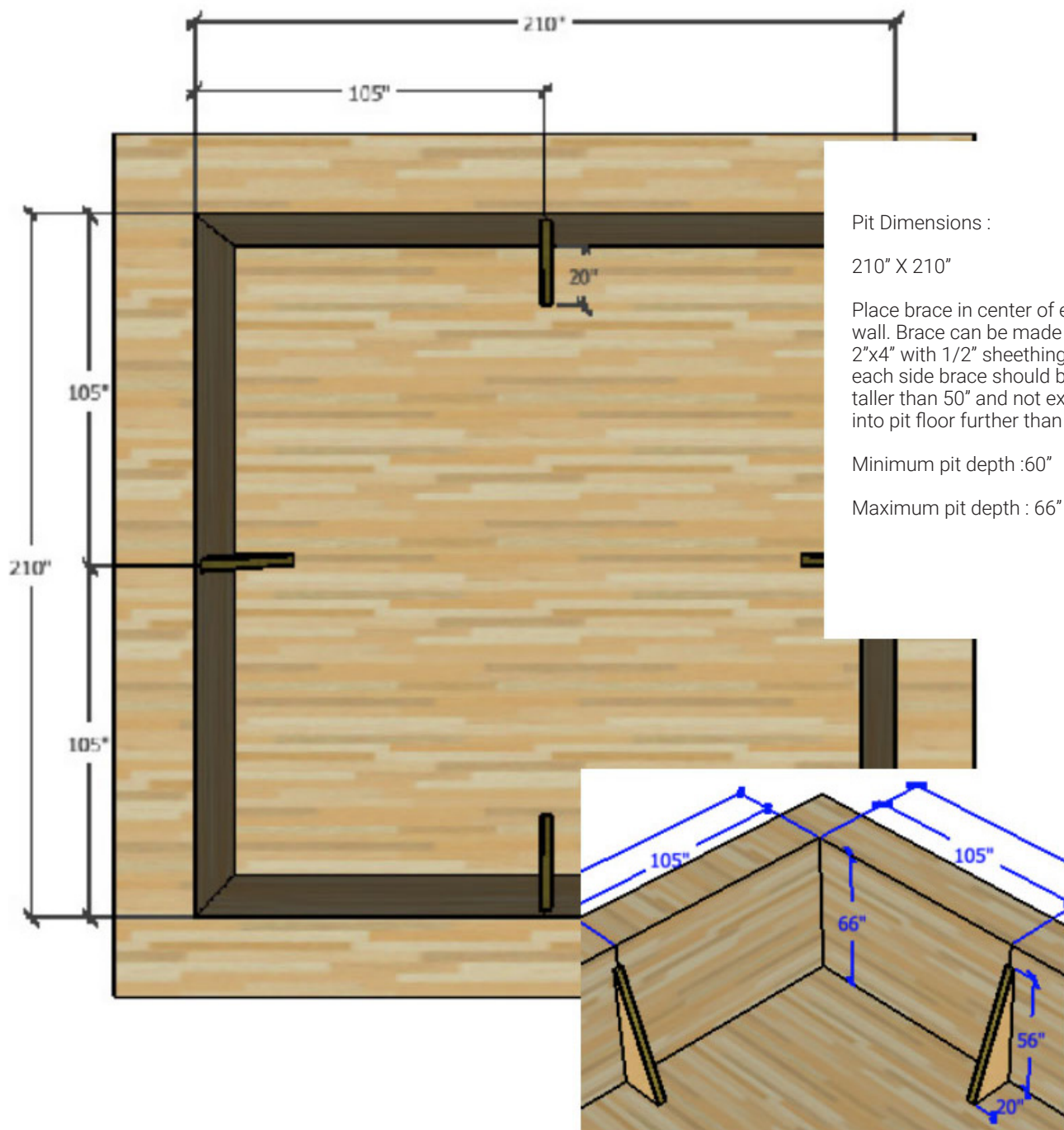
PROCEED STACKING TIMBERS



FIGURE 1.2 - T-SUPPORT DIMENSIONS



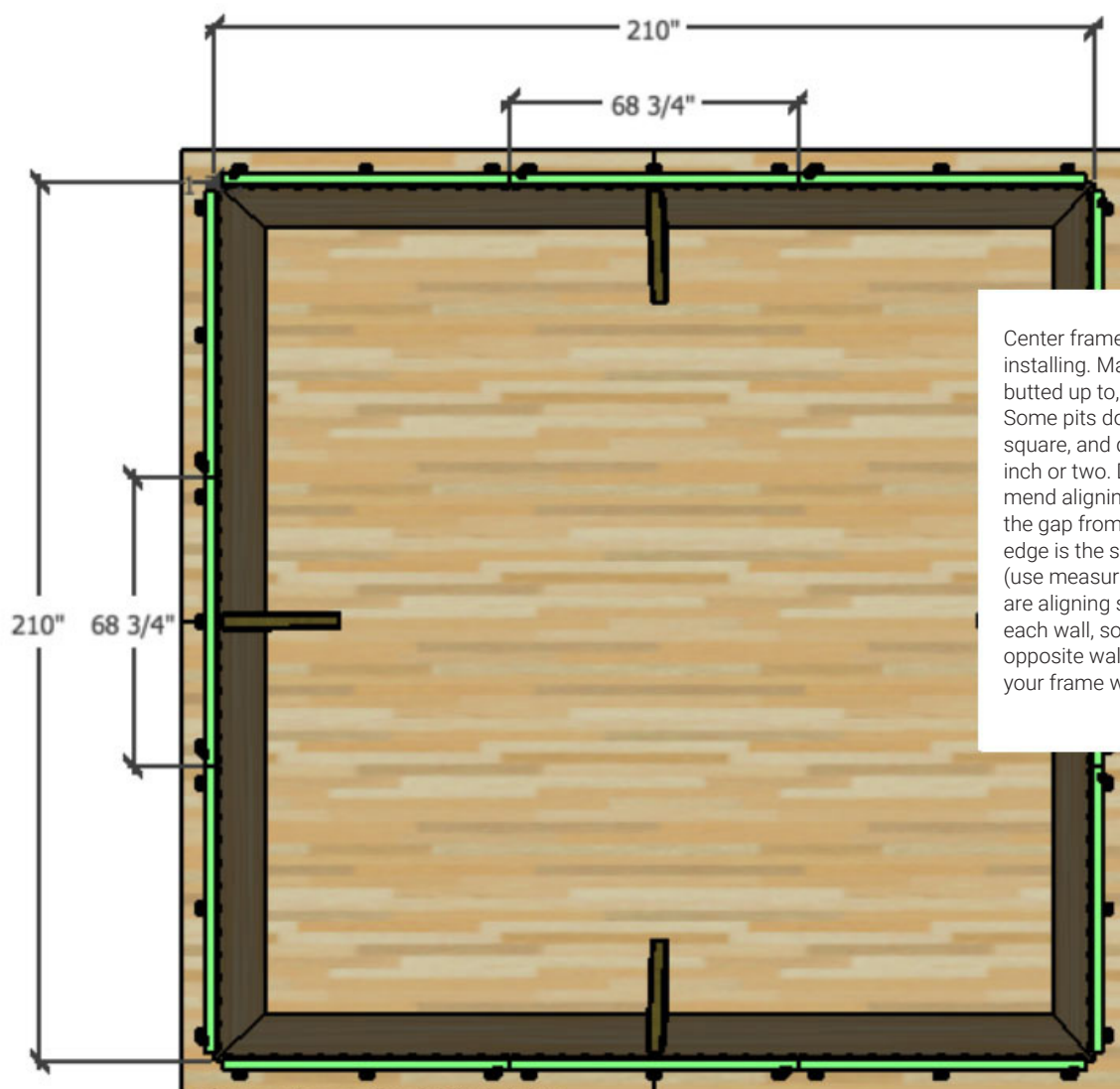
PIT AND BRACING



14 X 14 FRAME SETUP DIAGRAM

(6) Short Side Pieces (use 3 on each end)

(6) Long Side Pieces (use 3 on each side)



Center frame pieces on the side you're installing. Make sure all pieces are butted up to, and touching each other. Some pits don't end up being perfectly square, and dimensions may vary by an inch or two. Due to this, we recommend aligning the frame pieces so that the gap from the corner to the frame edge is the same distance at each end (use measuring tape). This way, you are aligning side-frames centered on each wall, so even if the length of your opposite walls are slightly different, your frame will still be centered.

Once the 3 frame sections are aligned, drill or bolt down the middle tab of the middle section first. Next proceed to bolt down the rest of the tabs on that side.

STANDARD SPRING SETUP GUIDE

Standard Corner Spring Setup :

4 Per Corner

16 Corner Springs (total)

Stretch to 20" from frame to trampoline bed.

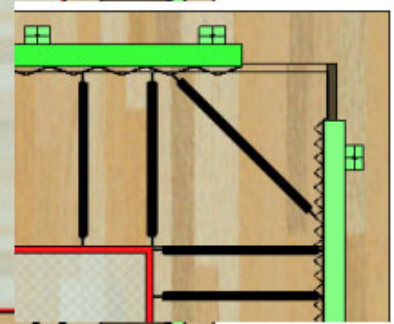
Start the first spring 20" from the corner on each side.

Corner
Springs
(12 total)

After corner spring installation, all remaining side springs (RSF 1034) will be placed 5-1/4" apart from one another to complete the spring and trampoline bed installation.

Frame

Trampoline Bed



Any additional side springs not being used, can be placed diagonally, in the corners. This will help support the pads and help prevent legs from accidentally slipping through the hole.

TRAMPOLINE PAD INSTALLATION (FOR PREMIUM AND DELUXE PADS ONLY)

1. ORGANIZE YOUR PADDING AND PREP FOR INSTALLATION

Layout foam pieces to figure out which pieces go where, refer to TRAMPOLINE PAD INSTALLATION diagram (page 16). Generally, if one side of your trampoline is longer than 8' you will be required to glue two pieces of equal length together to make a complete pad. For instance if you have a 7' x 14' trampoline, you will be required to glue together (2) 7' sections in order to make the 14' pad. The 7' section would come as a whole complete piece since it is under 8'.

2. GLUE THE LONG SIDE PADDING TOGETHER

Once your pads have been organized for where they will be positioned around the trampoline:

A - Spray glue both ends of the 2 pads where they will attach to each other, in the middle. (If you don't understand this step, re-read step number 1 and/or see diagram on page 16).

B - Let sit until tacky for 1-2 minutes.

C - Put both pieces together and allow to sit for 30 minutes.

3. INSERT FOAM INTO VINYL COVERS

After the glued-together foam pieces have sat for 30 minutes or more, stuff pads into their vinyl covers. If you have premium padding 9" thick then proceed to step 5. If you have deluxe then go to step 4.

4. INSERT 1.25" THICK CLOSED CELL FOAM SPACERS

A - Stuff the included 1.25" thick, closed cell foam into the vinyl padding covers, underneath the larger foam pieces, and toward the outer edge (zipper side) of padding (Closed Cell Foam should not be under the nose or slanted portion of the padding).

B - Please be sure that closed cell foam is placed under all the deluxe padding and zip closed.

5. ALIGN PADDING AND SECURE WITH VELCRO STRAPS.

A - Align your padding around the trampoline.

B - Place velcro straps onto corner and side bags where they meet. You will notice that there will be an area where velcro is already sewn onto the vinyl bags.

TIP: You will want to put the notched velcro on first and then place the non-notched piece on second.

(See diagram on page 19)

TRAMPOLINE PAD INSTALLATION

1. ORGANIZE YOUR PADDING AND PREP FOR INSTALLATION

Layout pads to figure out their position.

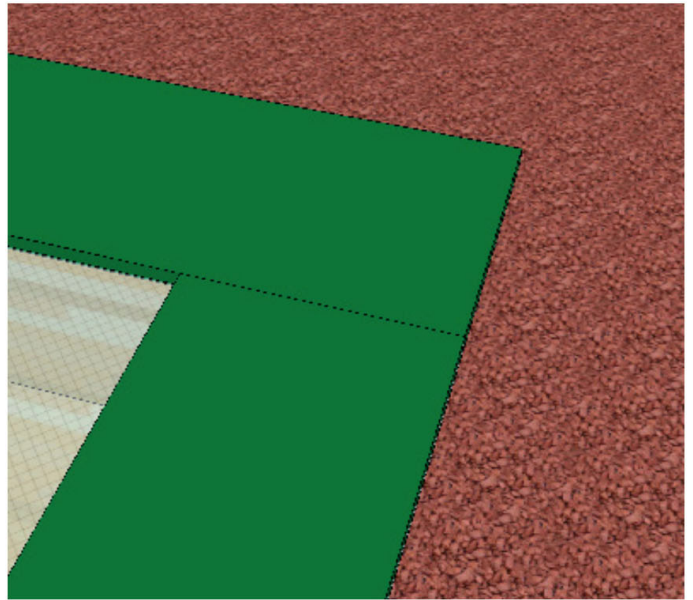
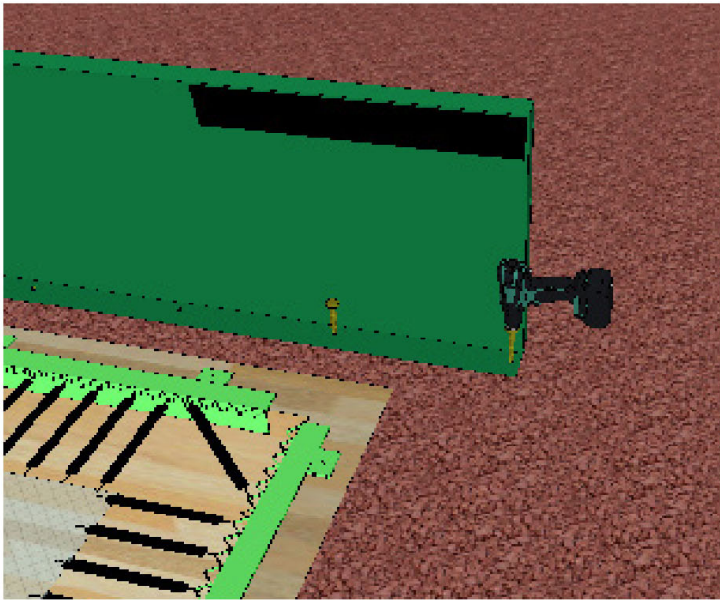
2. MOVE INTO POSITION

Move pads into position, so pads are snug to each other and cover springs. Make sure anchoring flaps are positioned to the outside, and tucked neatly underneath outer edge of pads.

3. SECURE WITH LANDSCAPE SPIKES THROUGH FLAPS.

Carefully hinge up a pad, making sure that the anchoring flap stays in position, and anchor in place, using landscaping spikes. Drive a spike through anchoring flap every 36 inches. After anchoring in position, flip pad back down into position.

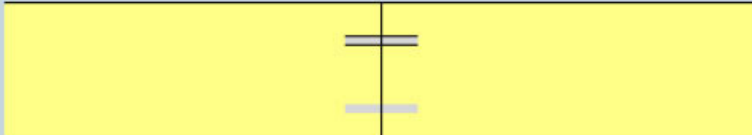
4. In diagram spring pad covers are shown these steps of installing pads will also work on Deluxe and Premium models.



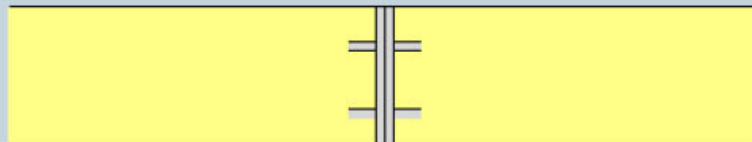
DELUXE PADDING OLETEx INSTRUCTIONS



STEP 1 : TAPE BOTH PIECES OF OLETEx TOGETHER HORIZONTALLY

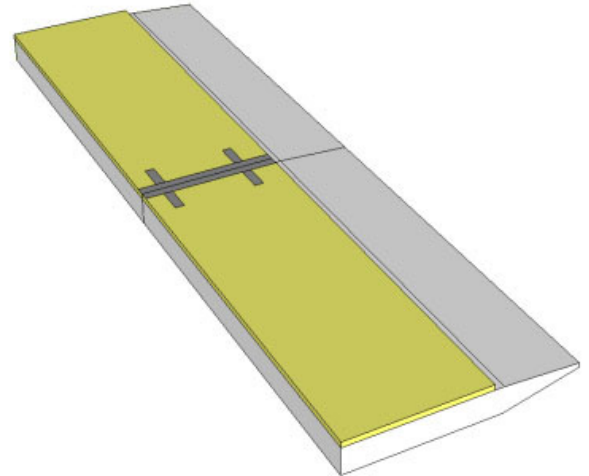
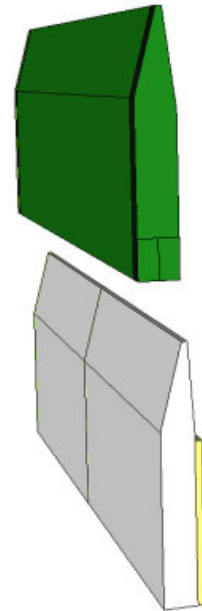


STEP 2 : TAPE OLETEx TOGETHER VERTICALLY

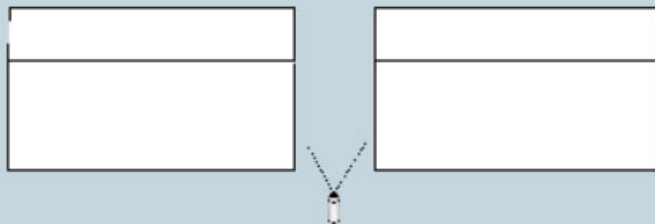


FLIP AND REPEAT

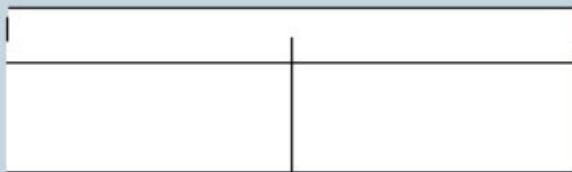
OLETEx PLACED ON BOTTOM OF FOAM

STEP 4 : STAND FOAM ON BACK EDGE AND SLIP COVER OVER
THIS IS EASIEST WITH 2 PEOPLE

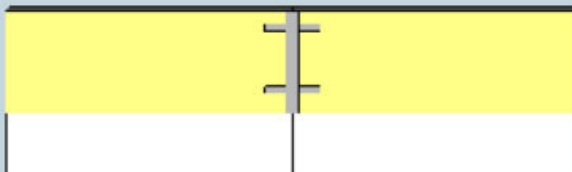
DELUXE FOAM INSTRUCTIONS



STEP 1 : SPRAY SIDES OF BOTH PIECES



STEP 2 : LET SIT FOR 30 SECONDS THEN PUSH PIECES TOGETHER



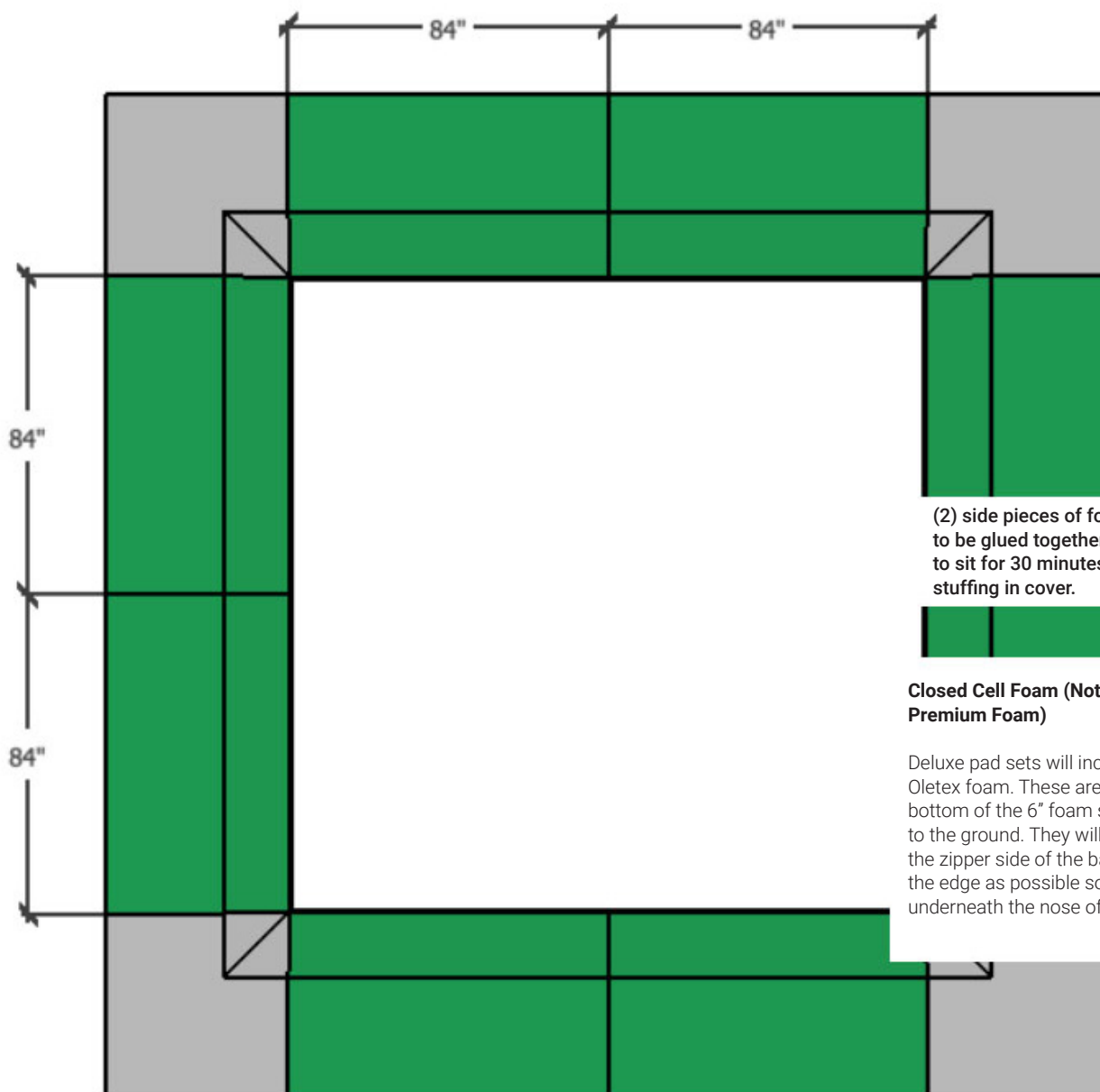
STEP 3 : FLIP OVER FOAM SPRAY BOTTOM AND PLACE OLETEx

STEP 5 : FLIP DOWN



TRAMPOLINE FOAM INSTALLATION

14' X 14' FOAM CONTENTS:
 4 : 48" X 48" CORNERS (ALREADY FITTED)
 8 : 84" LONG SIDE PIECE



(2) side pieces of foam will need to be glued together then allowed to sit for 30 minutes before stuffing in cover.

Closed Cell Foam (Not included with Premium Foam)

Deluxe pad sets will include sheets of 1.25" Oletex foam. These are to be added to the bottom of the 6" foam so that they are closer to the ground. They will be positioned toward the zipper side of the bag and as close to the edge as possible so that they are not underneath the nose of the pads.

(2) end pieces of foam will need to be glued together then allowed to sit for 30 minutes before stuffing in cover.

SECURING YOUR PADDING WITH VELCRO STRAPS (APPLIES TO PREMIUM AND DELUXE)

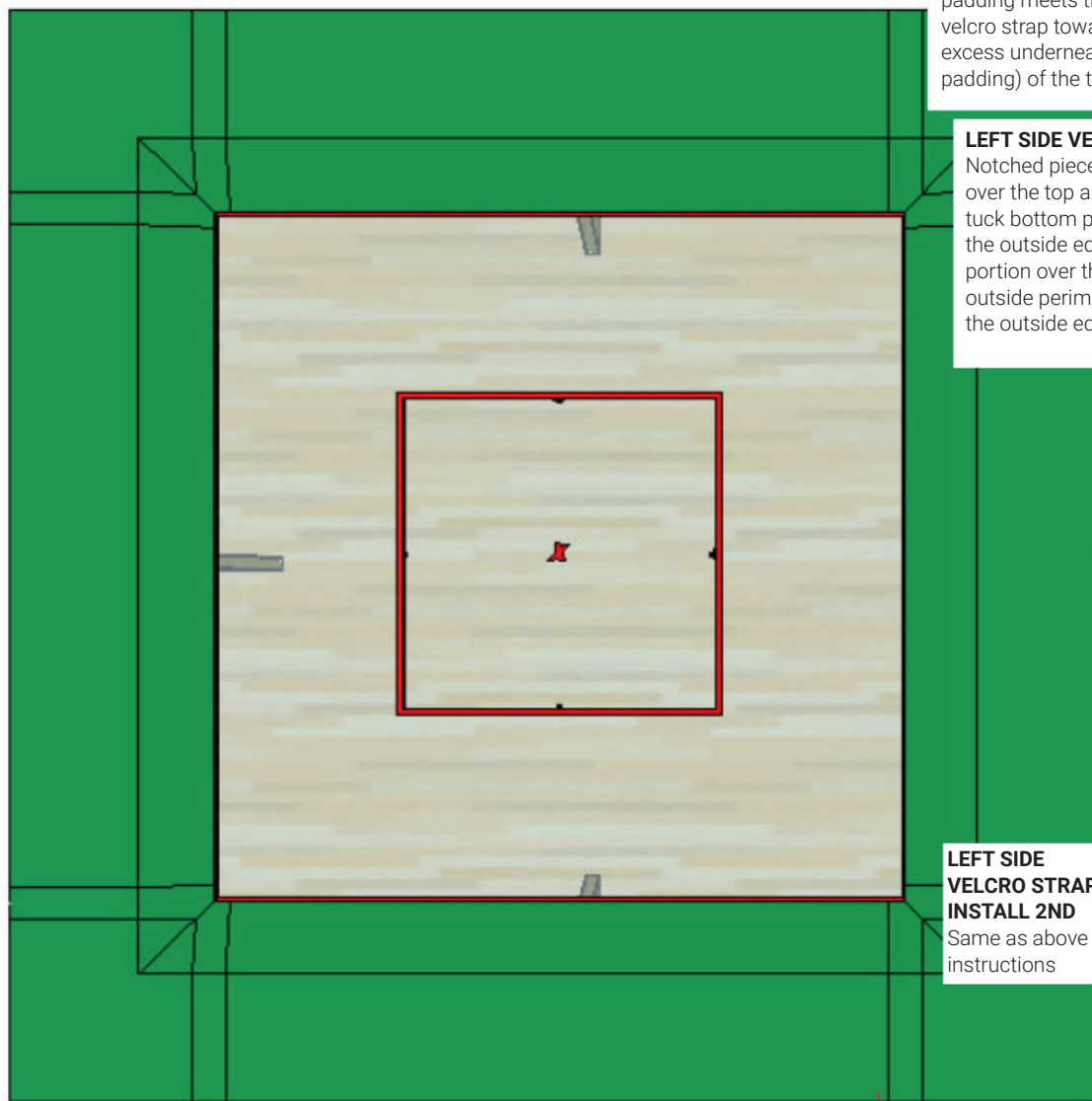
NOTE: There are (4) straight straps and (2) left side notched straps and (2) right side notched straps.

STRAIGHT VELCRO STRAP - INSTALL 1ST

Start with the strap attached to outside edge of trampoline towards the bottom where the padding meets the ground. Continue attaching velcro strap towards the trampoline bed and wrap excess underneath the nose (slanted portion of padding) of the trampoline.

LEFT SIDE VELCRO STRAP - INSTALL 2ND

Notched piece will slide around the nose and over the top and bottom of trampoline pad - tuck bottom portion under the pad toward the outside edge of the trampoline - wrap top portion over the top of the pads towards the outside perimeter of the trampoline and down the outside edge of the pads.

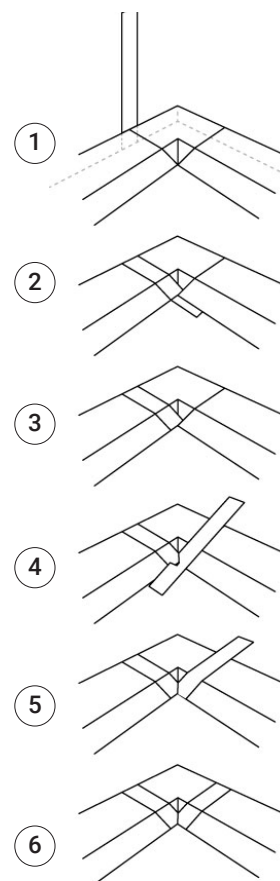


LEFT SIDE VELCRO STRAP INSTALL 2ND

Same as above instructions

STRAIGHT VELCRO STRAP INSTALL 1ST

Same as above instructions



CONGRATULATIONS !

YOU HAVE COMPLETED YOUR INSTALL
BELOW IS 14'X14' TRAMPOLINE

PLEASE NOTE : **RED CLIPS** SHOW AT EDGE OF PADDING
THIS IS SO PADS DO NOT RUB ON STRINGS AND BREAK THEM

